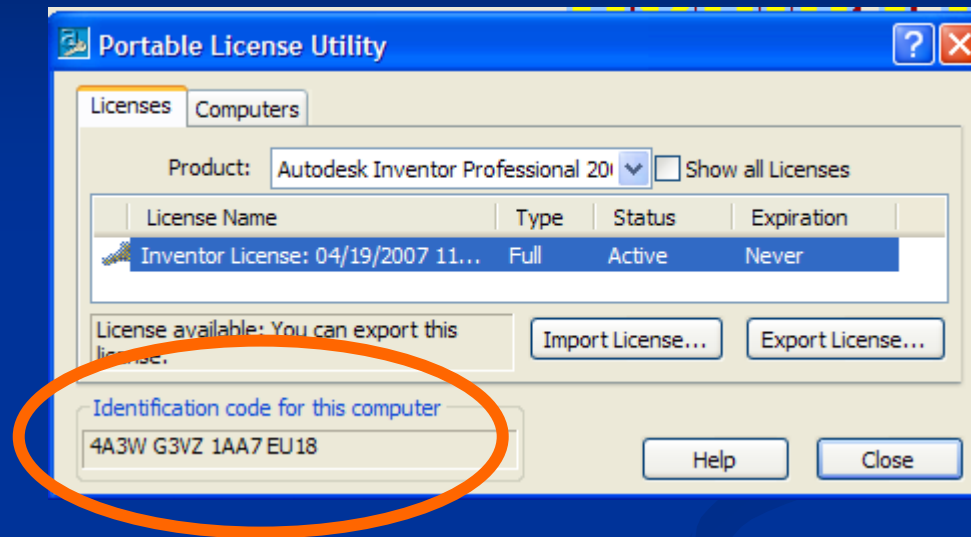


Autodesk Portable Licence Utility

Envisage UK Ltd
January 2008

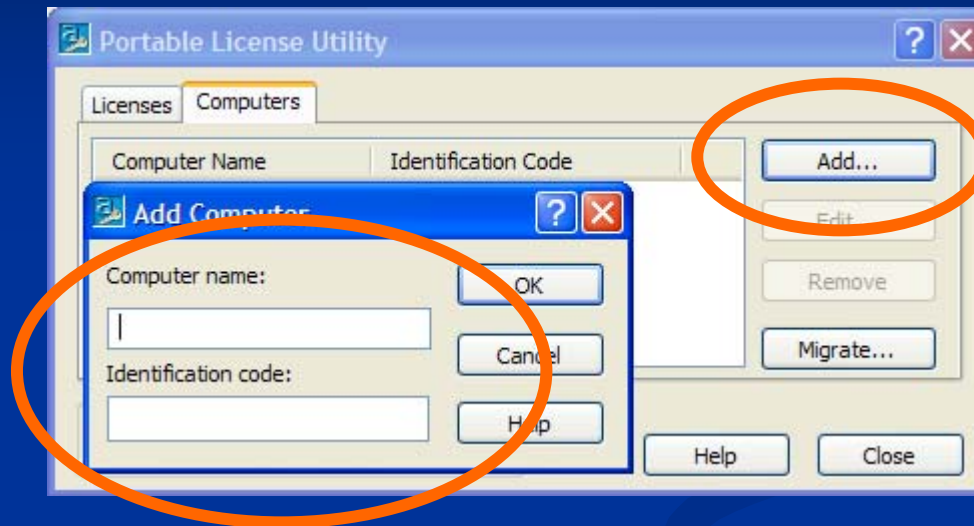
Home PC



■ STEP 1

- •Start, Program Files, Autodesk, Inventor, Portable Licence Utility on the computer you want to export the licence to, i.e. home pc:
- •Note 'Identification code for this computer'

Work PC

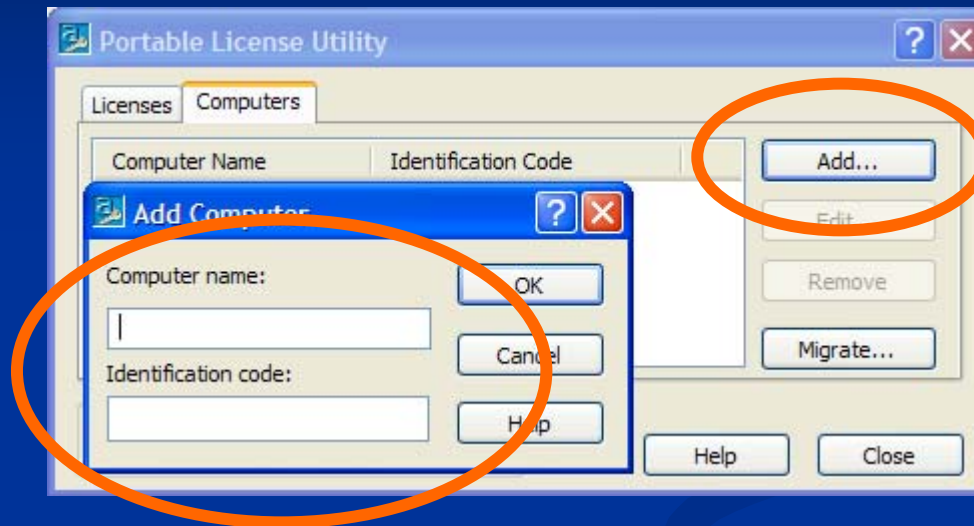


STEP 2

Start, Program Files, Autodesk, Inventor, Portable Licence Utility on the computer you want to export licence from, i.e. your work PC

- Select the ADD option under the "Computers" tab.
- Enter a name for the computer and 'Home PC identification code". Click on OK

Work PC

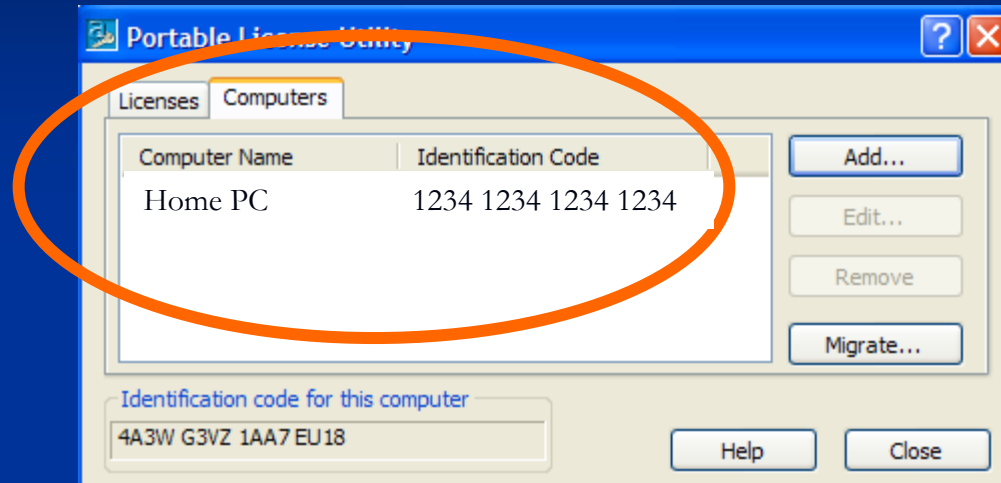


STEP 3

Start, Program Files, Autodesk, Inventor, Portable Licence Utility on the computer you want to export licence from, i.e. your work PC

- Select the ADD option under the "Computers" tab.
- Enter a name for the computer and 'Home PC identification code". Click on OK

Work PC



STEP 4

System lists all computers
i.e. 'home pc' and 'work pc'

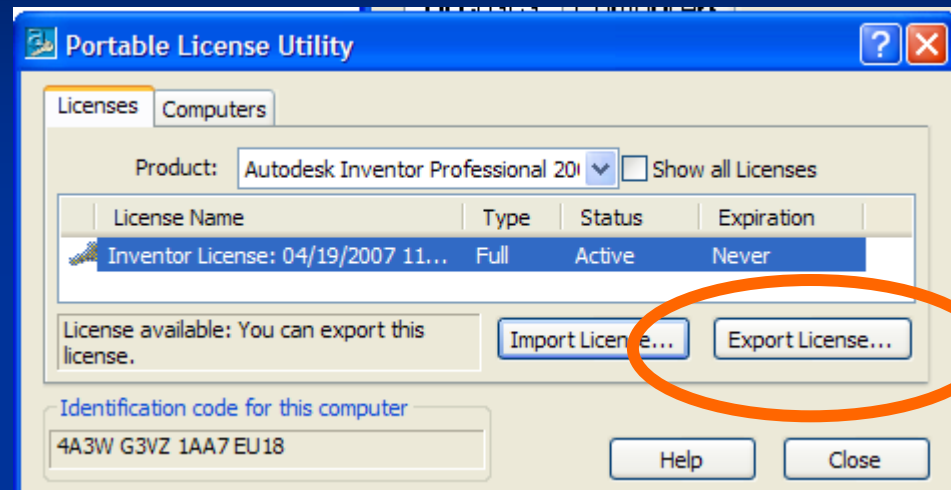
Work PC

STEP 5

- Exporting your license
- Specify a location to export the licence file:

Note: Export the licence to your C: drive and manually copy it to a memory stick or email it to your home email address.

If you export the licence to a memory stick and the disk is corrupt your license will be lost. Exporting to the C:drive allows you to copy it again.



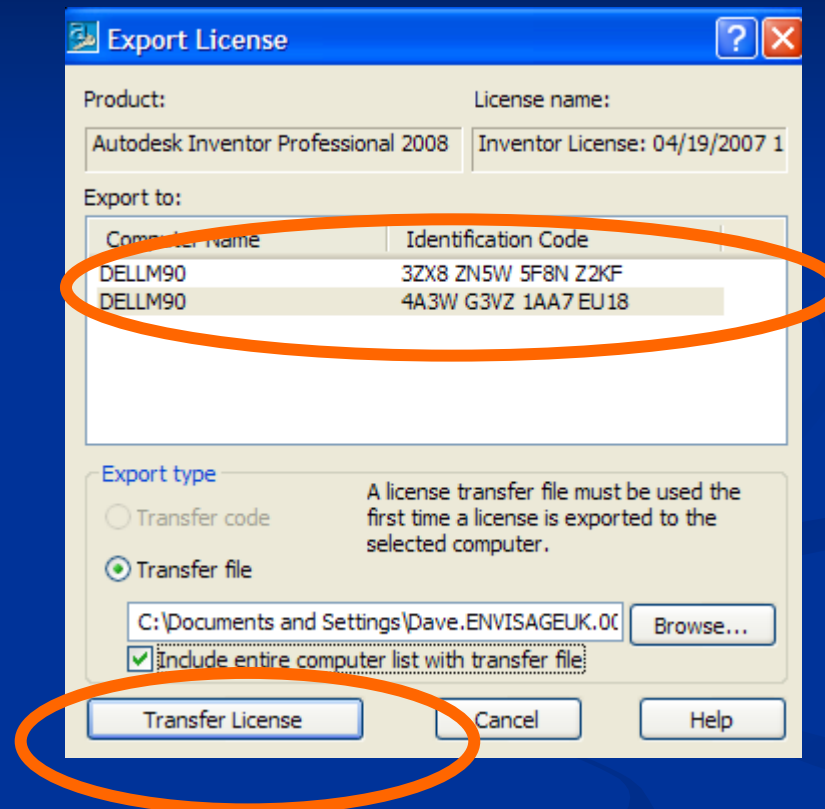
Work PC

STEP 6

- Select Computer name to export
- Set Transfer file option
- Ensure transfer file directory is set correctly
- Tick option to include entire computer list with transfer file

STEP 7

- Select Transfer licence



Work PC

The system will display this message when license has been exported



Home PC



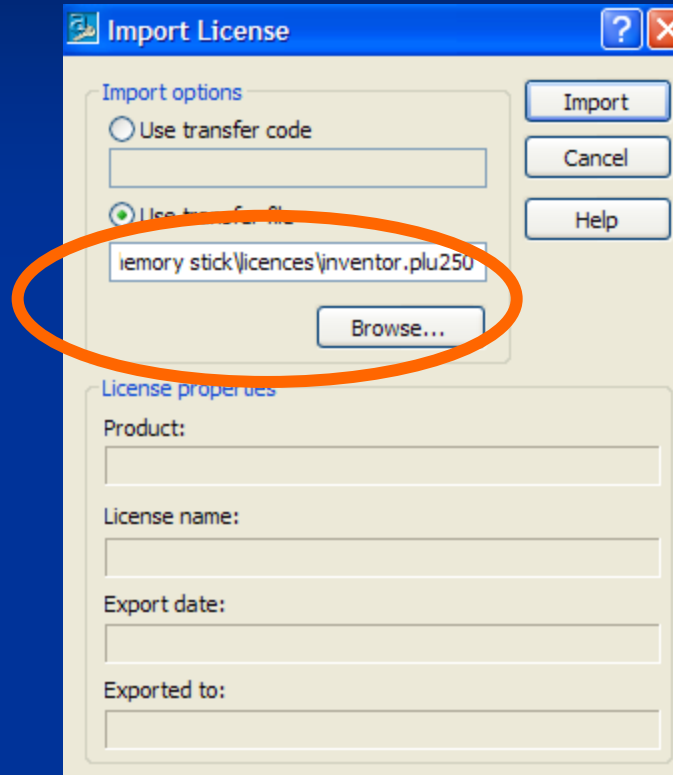
STEP 1 (Import)

- Select “Import License”

Home PC

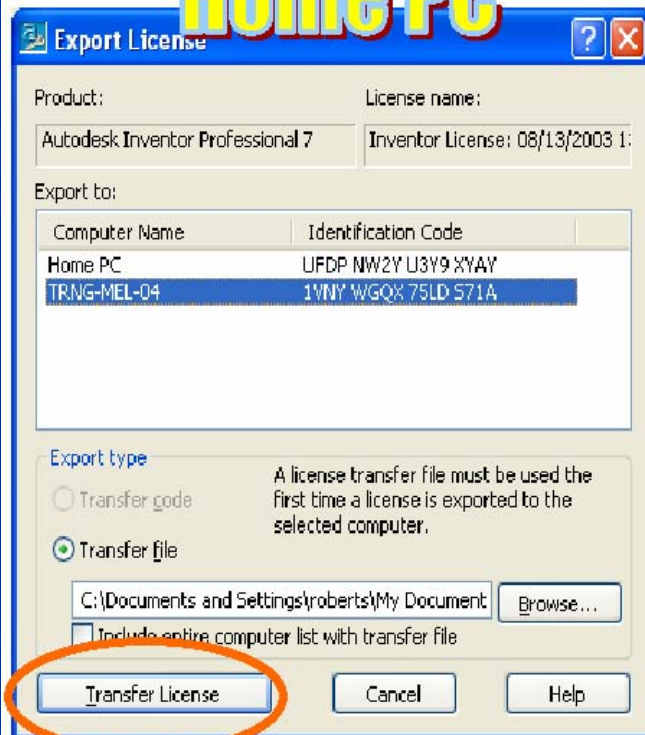
STEP 2 (Import)

- Browse for file location and click on Import

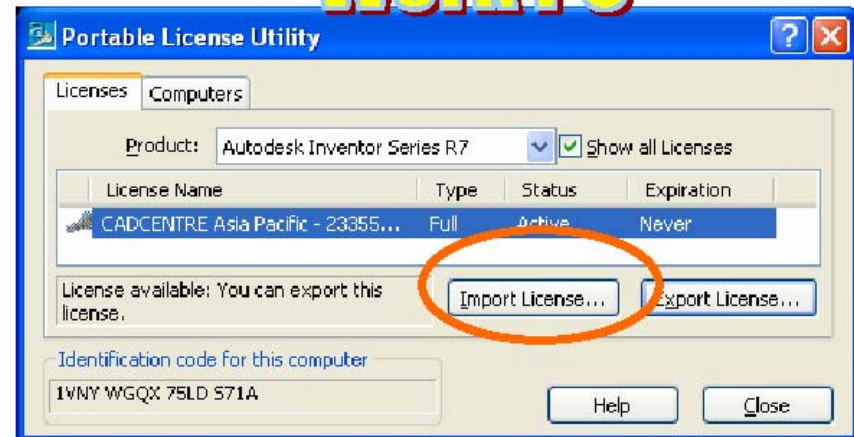


Same for Home to Work

Home PC



Work PC



Thank you

- Envisage UK Ltd
- Tel: 01656 662414
- sales@envisageuk.com
- www.envisageuk.com