

# Suggested Application Options Settings for Autodesk Inventor

TEL: 0165 666 24 14      [support@envisageuk.com](mailto:support@envisageuk.com)

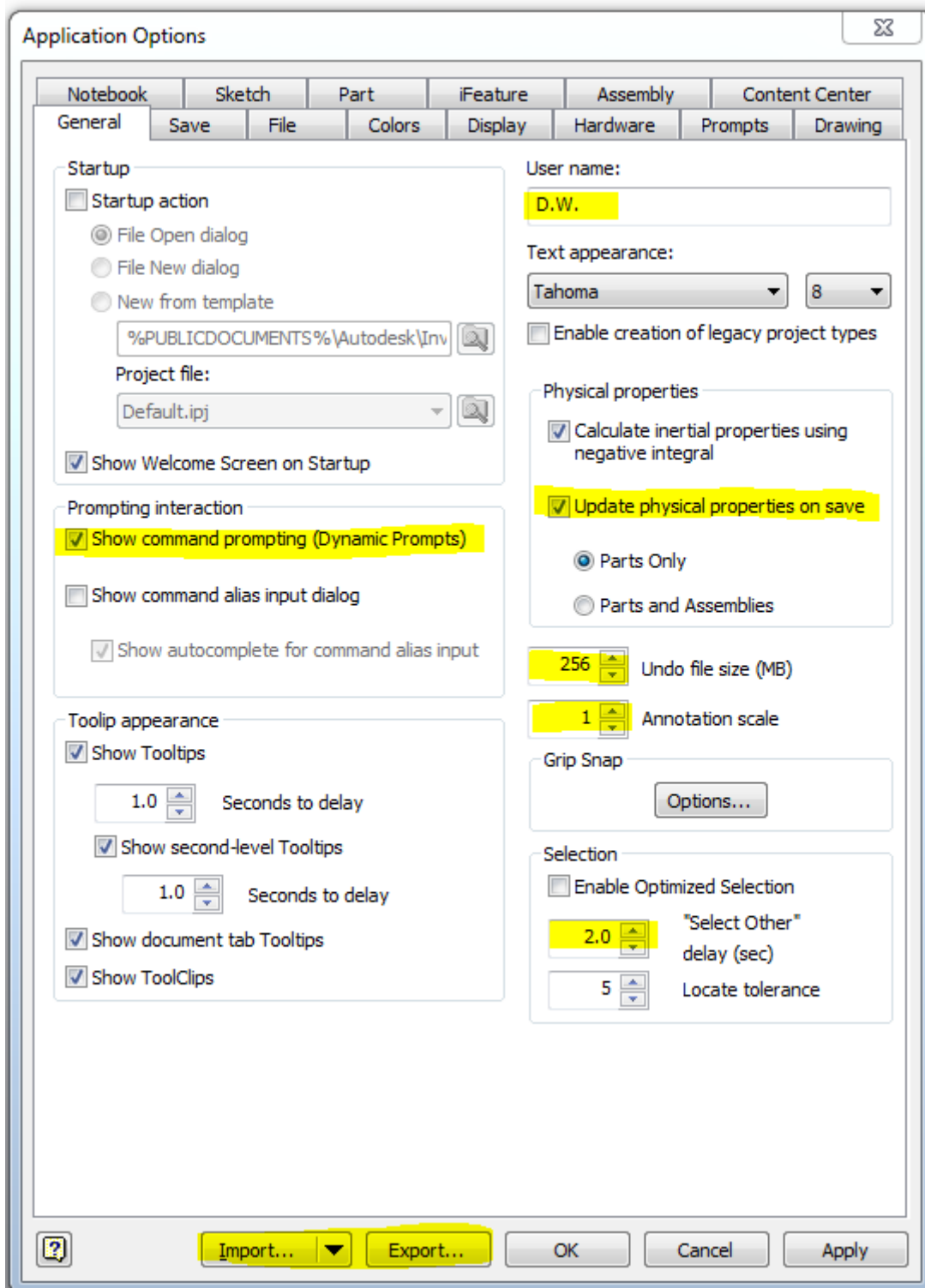
PLEASE NOTE, THIS IS ONLY A GUIDE – ANY QUESTIONS AT ALL – PLEASE RING

The following are suggested application option settings for Autodesk Inventor 2014. These settings are accessed through the Tools Ribbon > Application Options.

Inventor 2014 has a pair of commands in the Application Options dialog box. The **Import** and **Export** commands allow you to save changes to the application option settings and share them with other users.

They can also be used to make backup copies of your settings, allowing you to explore different choices, and then return to earlier settings if desired.

## General



**The User name** has been changed. This text is used in the default Autodesk title blocks for the "Drawn By" name, so it has been changed to be more appropriate for the title block text.

**Update Physical Properties on Save** get accurate data on save.

**Undo file size (MB)** Reduce to 256. The size of the undo file directly affects the amount of available RAM.

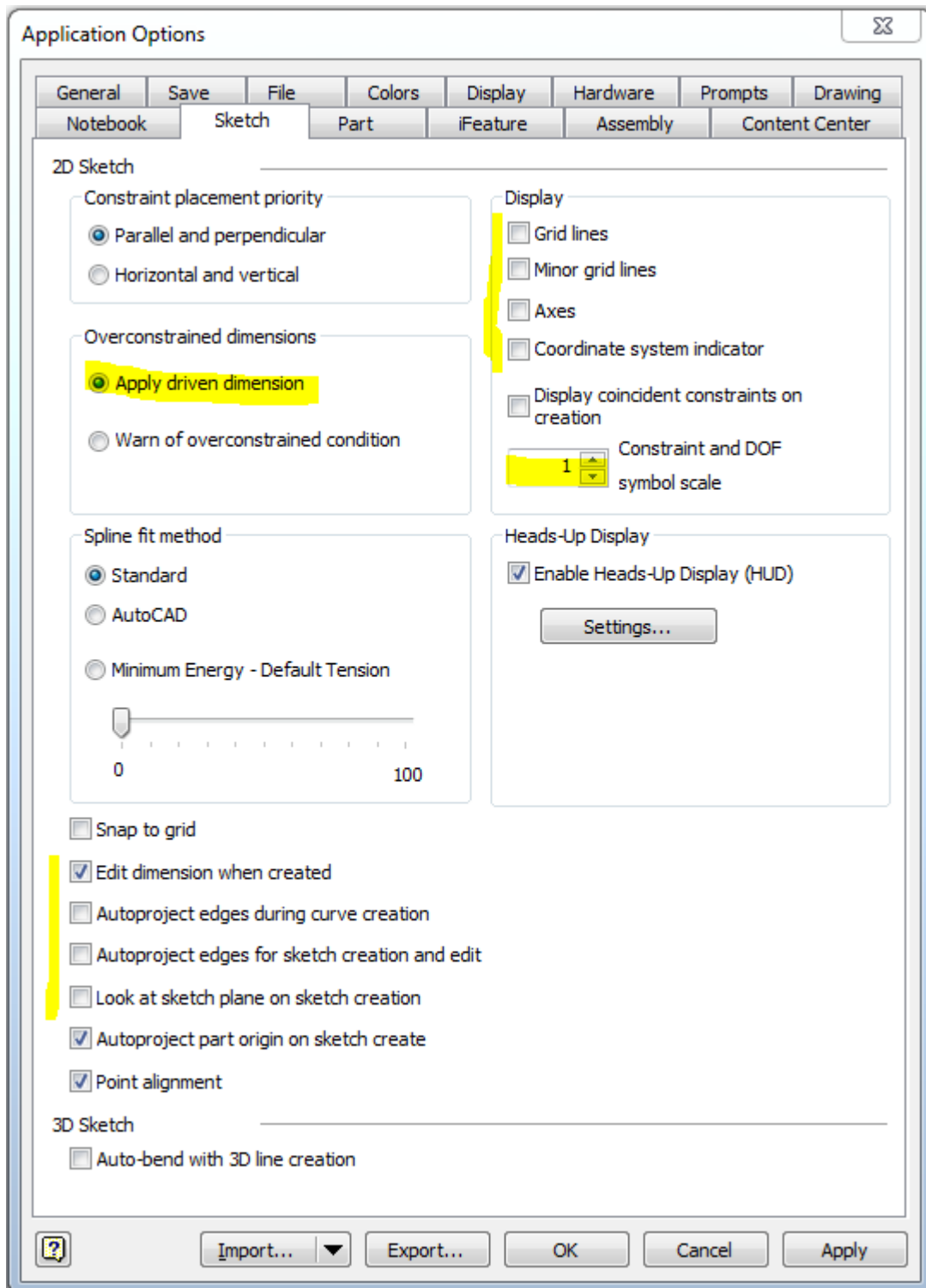
**Annotation scale** This controls the size of dimensions during sketching, making them easier to read. Drawing dimensions aren't affected by this value.

**Show Command Prompting** moves prompting from the bottom-left of the screen to the cursor.

**Select Other Delay** can be increased to slow down the display of this toolbar. This is useful when using the Tube & Pipe software.

**The IMPORT/EXPORT buttons** are useful to share settings around multiple users. An XML file is saved.

# Sketch



Change the **Overconstrained dimensions** behaviour to **Apply driven dimension**. This will avoid having a warning dialog box appear whenever an over constraining dimension is created.

Check **Edit Dimensions When Created**. Most often you will edit dimensions anyway.

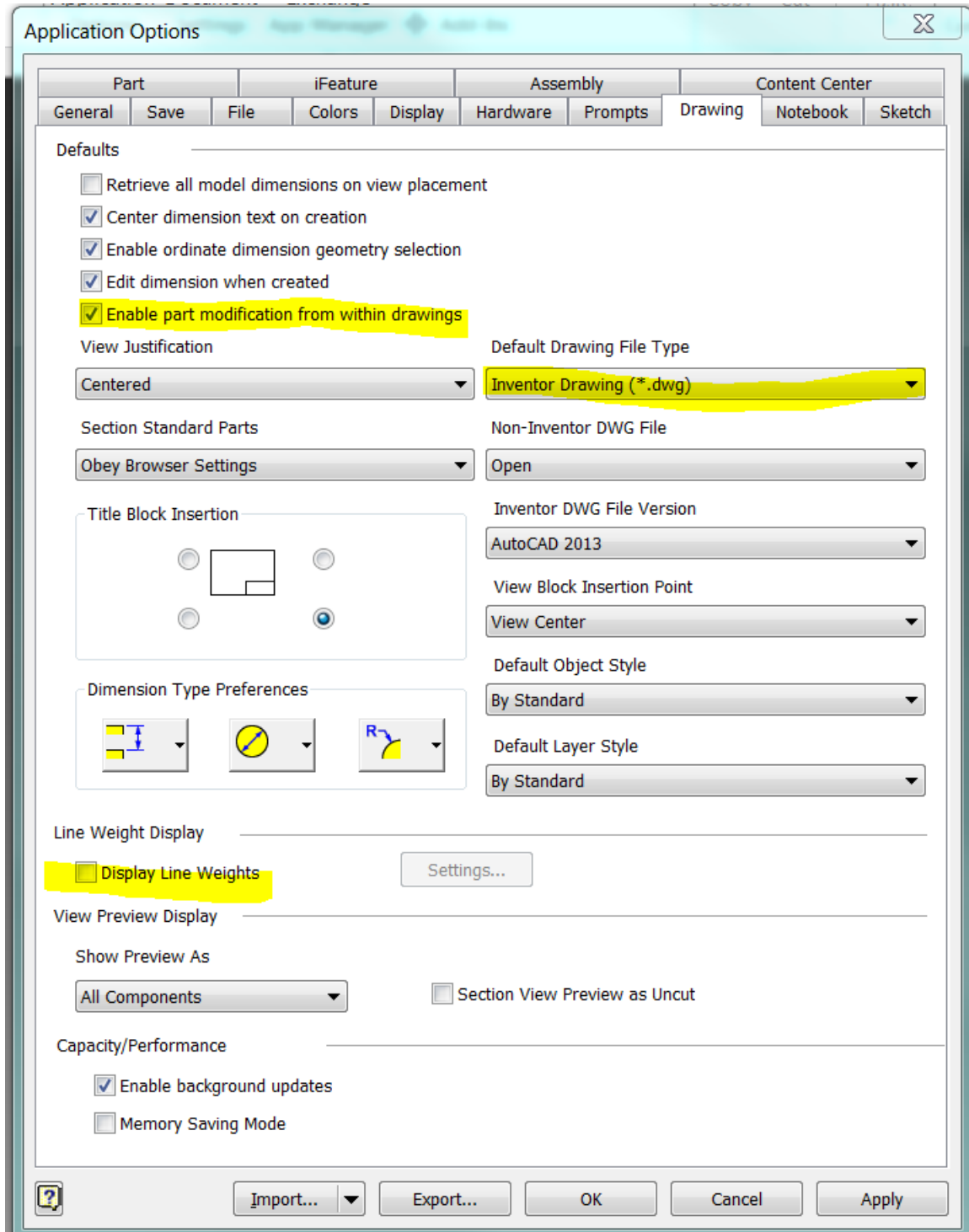
Turn off the **Autoproject edges** options, keeping these turned on will result in a bloated sketch and large file size.

**Look at sketch plane on sketch creation** is a matter of personal preference. If it is turned on it the viewpoint shifts to be looking straight at the sketch plane whenever a sketch is created or edited. The previous viewpoint is restored when the sketch editing is done.

Turn off the display of the **Grid lines, Minor grid lines, Axes** and **Coordinated system indicator**. This will clean up the sketch display and use less graphics resources.

Increasing the **Constraint Toolbar Scale** can make reading the constraint indicators much easier.

## Drawing



The **Default Drawing File Type** can be set to **Inventor Drawing (\*.dwg)**. This setting allows easier drawing sharing with AutoCAD. Make sure the **Open** option is set for **Non-Inventor DWG File** behaviour. AutoCAD data can then be copy and pasted without stepping thru the Import wizard.

Turn off the display of **line weights**.

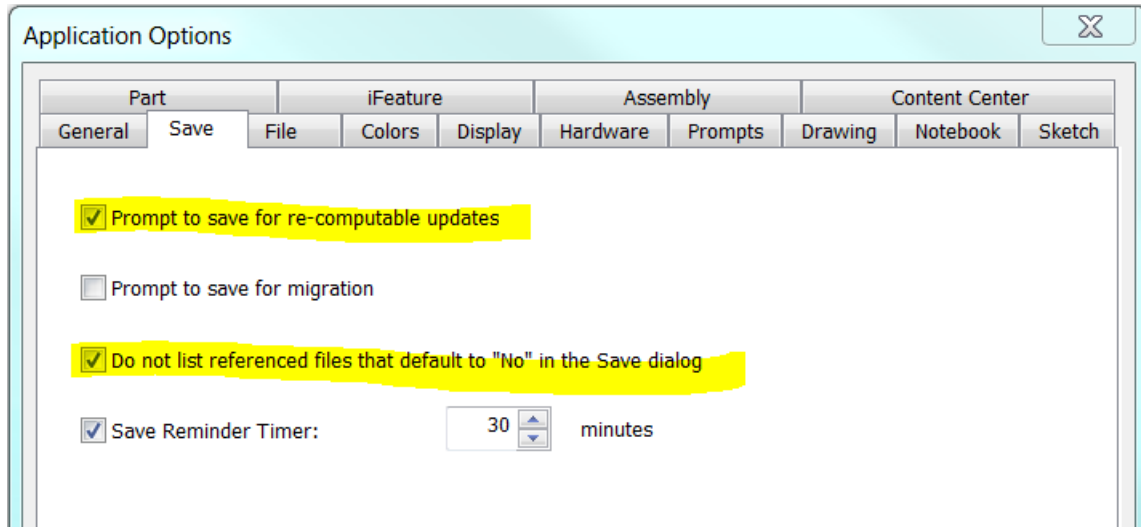
Only use **Memory Saving mode** when running out of memory. This will slow down performance of drawing creation.

If you notice that the view jumps around, then change **View Preview As** to Bounding Box mode.

You can now disable Part Modification from within drawings.

Inventor 2014 now uses multiple cores to process drawing views.

## Save

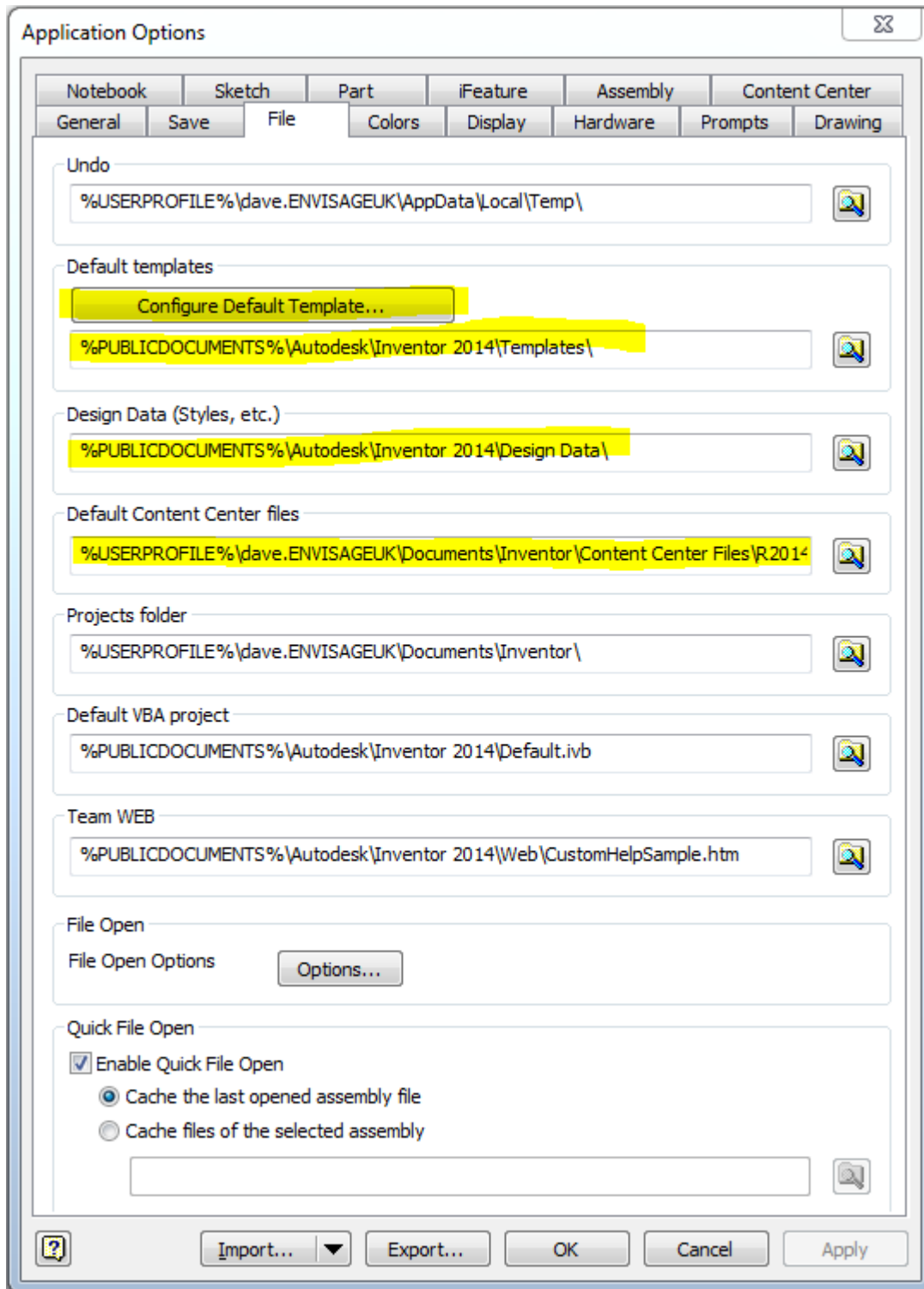


**Do Not List Reference Files** – Stops any components being listed that do not require saving.

**Prompt to save for re-computable updates** – Should be set if Vault is being used.



# File

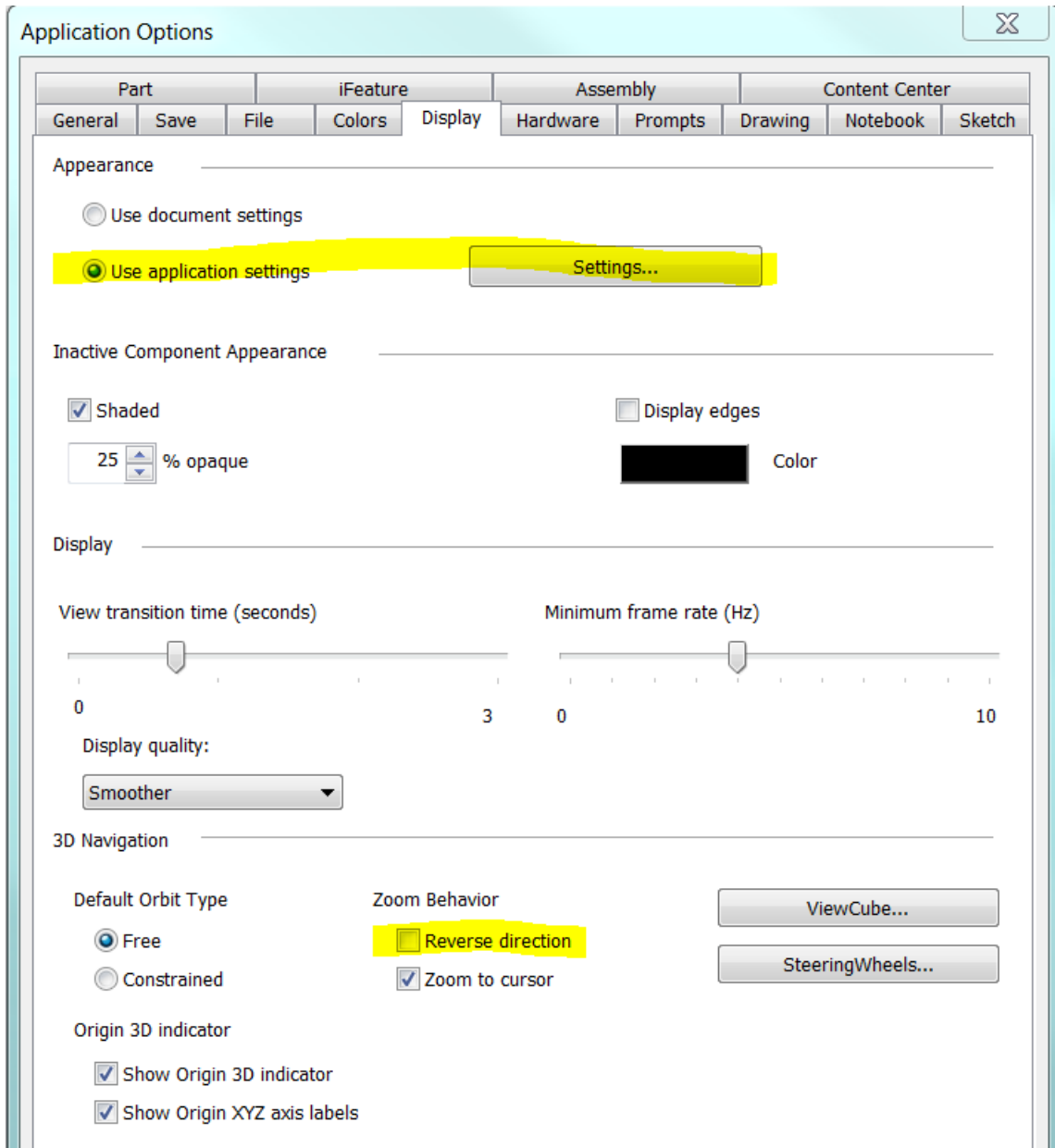


The **Configure Default Template** button can be used to change to the ISO METRIC standard for new installs. Do not use this if you are migrating from legacy templates.

These three file locations can be changed to point to a common location on a company network. This way templates, threaded hole sizes, fasteners, etc. don't have to be reloaded onto each machine when changes are made.

Please note – if migrating from a previous release, leave the content center location as it was in the previous release. Only migrate templates and styles to new folder locations.

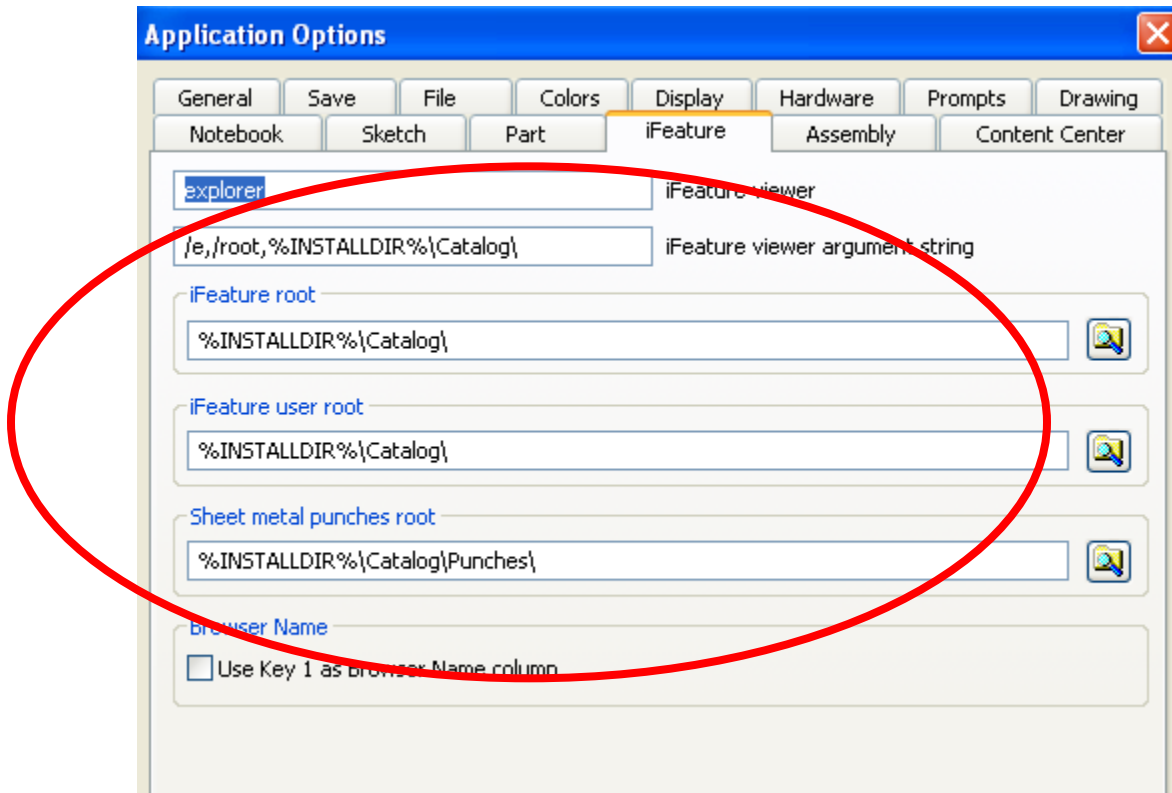
## Display



The **Reverse Direction** option can be turned on to change Inventor's wheel mouse behaviour to match the default behaviour of AutoCAD, if desired.

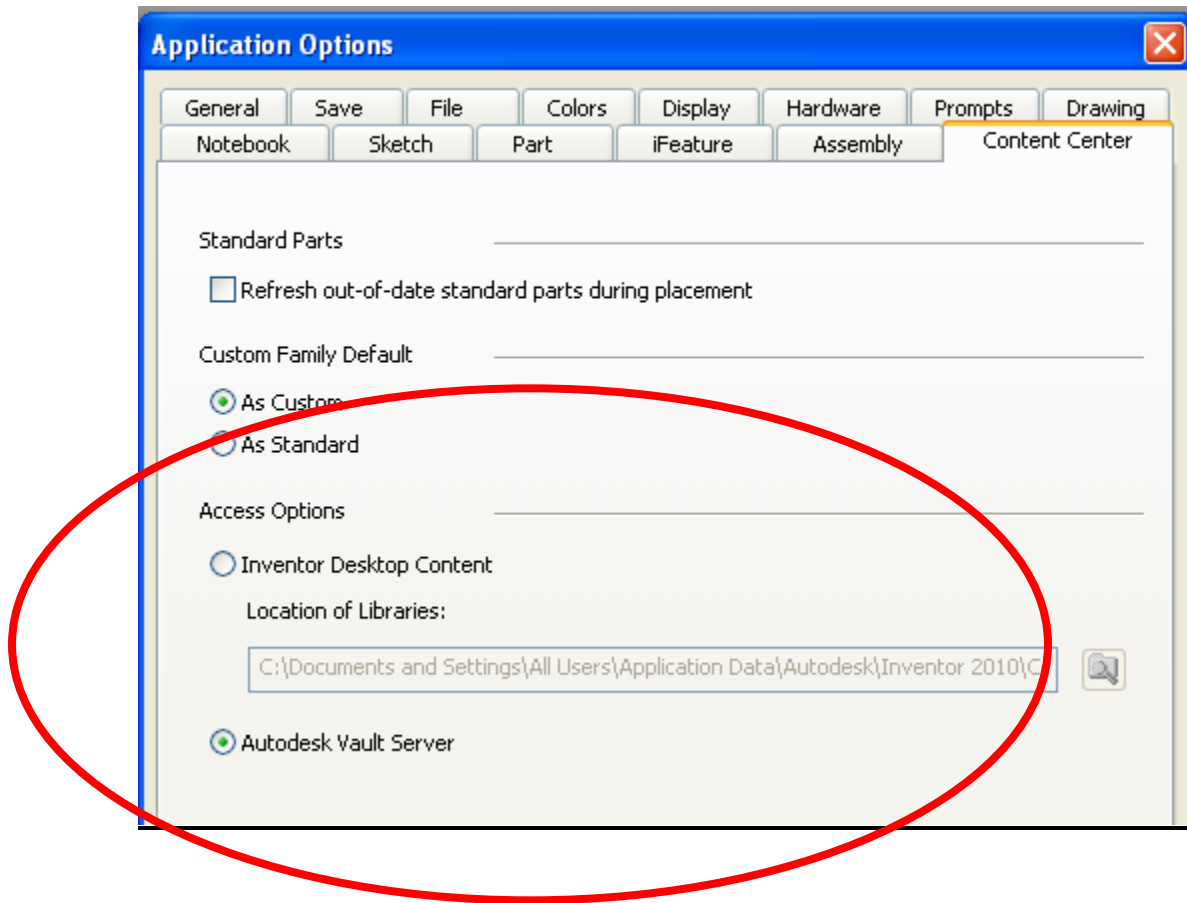
The **settings** button is used to set the default display attributes of models

## iFeature



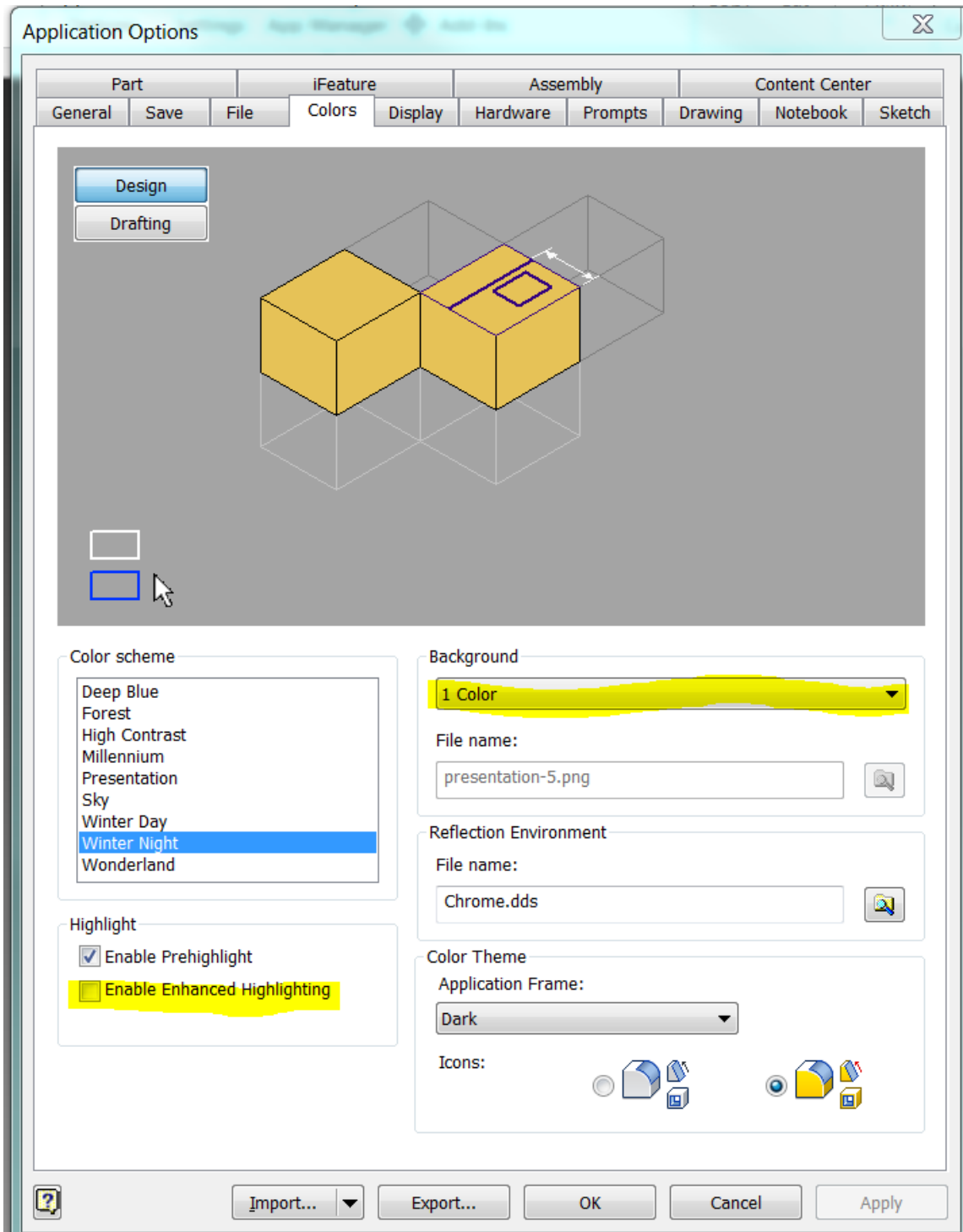
These three settings can be changed to point to a common location on a company network. This way typical features and sheet metal punches don't have to be reloaded onto each machine when changes are made.

## Content Center



You now have 2 options for the Content Centre libraries. Choose the Access Options as shown for either the Vault Server or the NEW Desktop Content (Ideal for standalone machines).

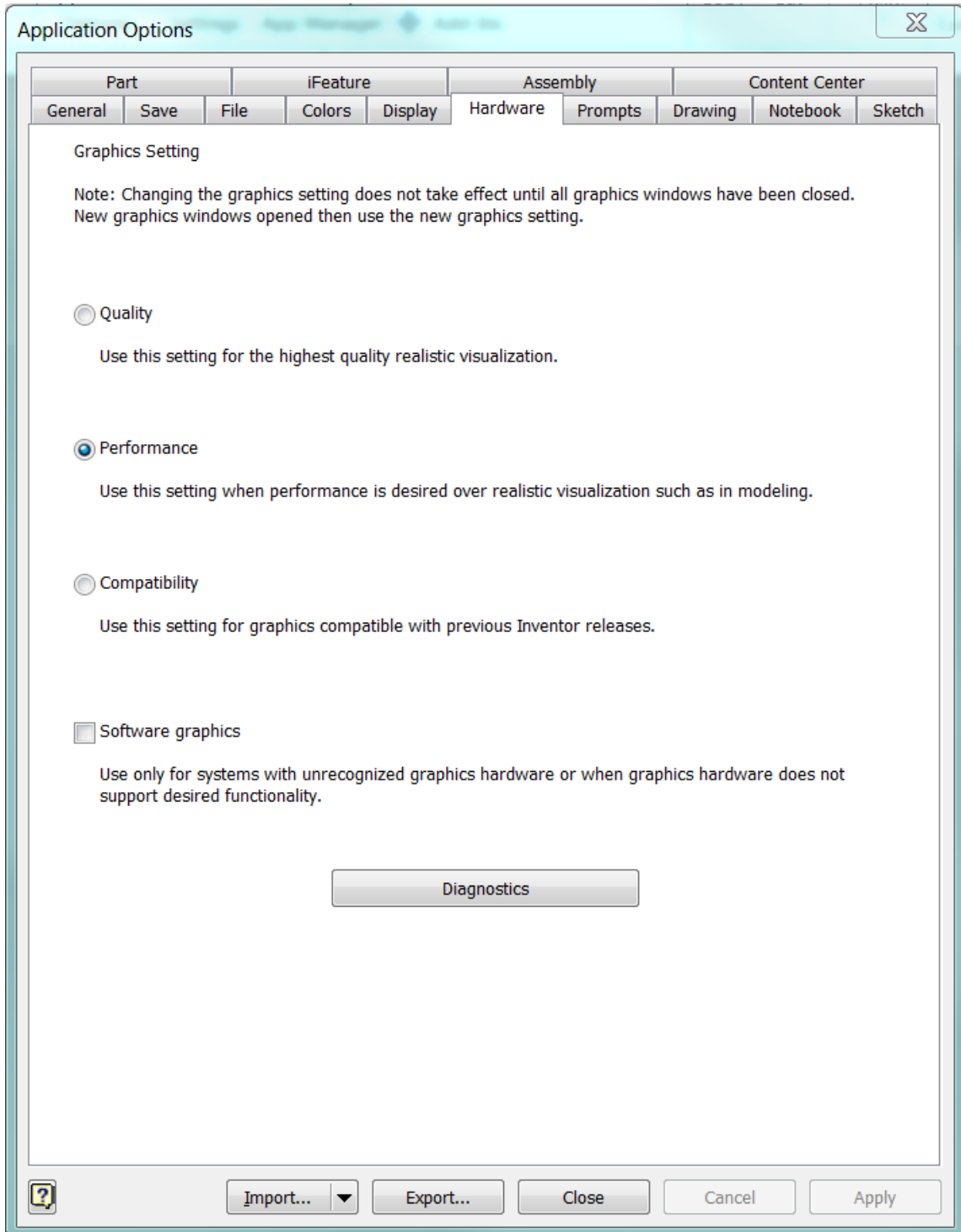
# Colors



Turn off **Enable Enhanced Highlighting**, you may find it easier on the eyes. Avoid using a gradient or image background, this is the least taxing on system resources.

Avoid using High Res images for the reflection environment unless making presentation quality renderings of the models.

## Hardware





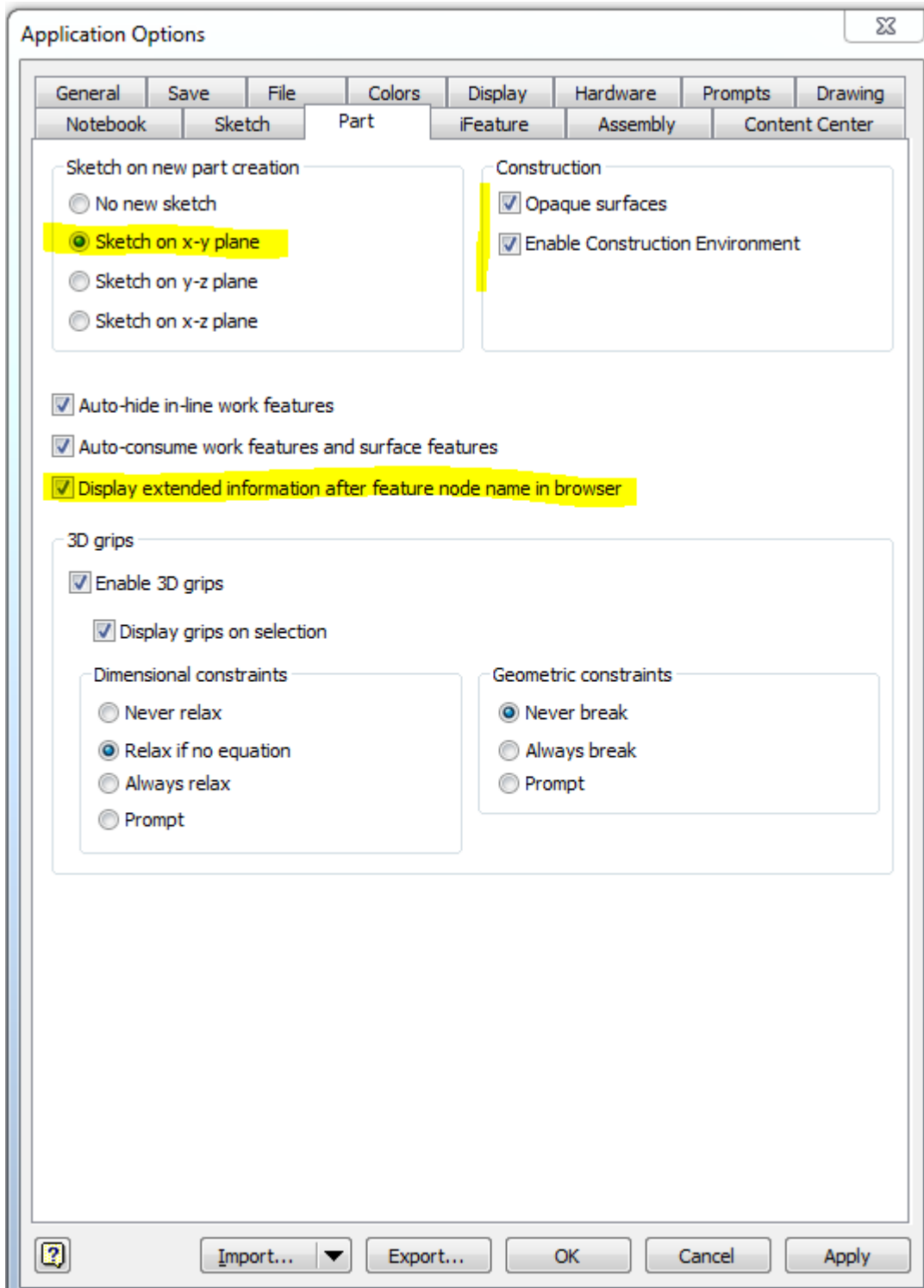
**Quality** – this setting favours graphics presentation over system performance. For machines running Windows 7, turns on anti-aliasing and improves the visual quality of the graphics display. No impact on windows XP.

**Performance** – This is the default setting. System performance is favoured over graphics presentation.

**Compatibility** – This setting uses the same graphics processes as the Inventor 2009 and earlier releases. Advanced display options are not available.

**Software graphics** – Specifies the use of software based graphics processing rather than hardware based. If the machine has an older graphics card, but running Windows 7, then it would be possible to access DirectX 10 supported features. If a machine is running slow, then check this option has NOT been switched on by accident.

## Part



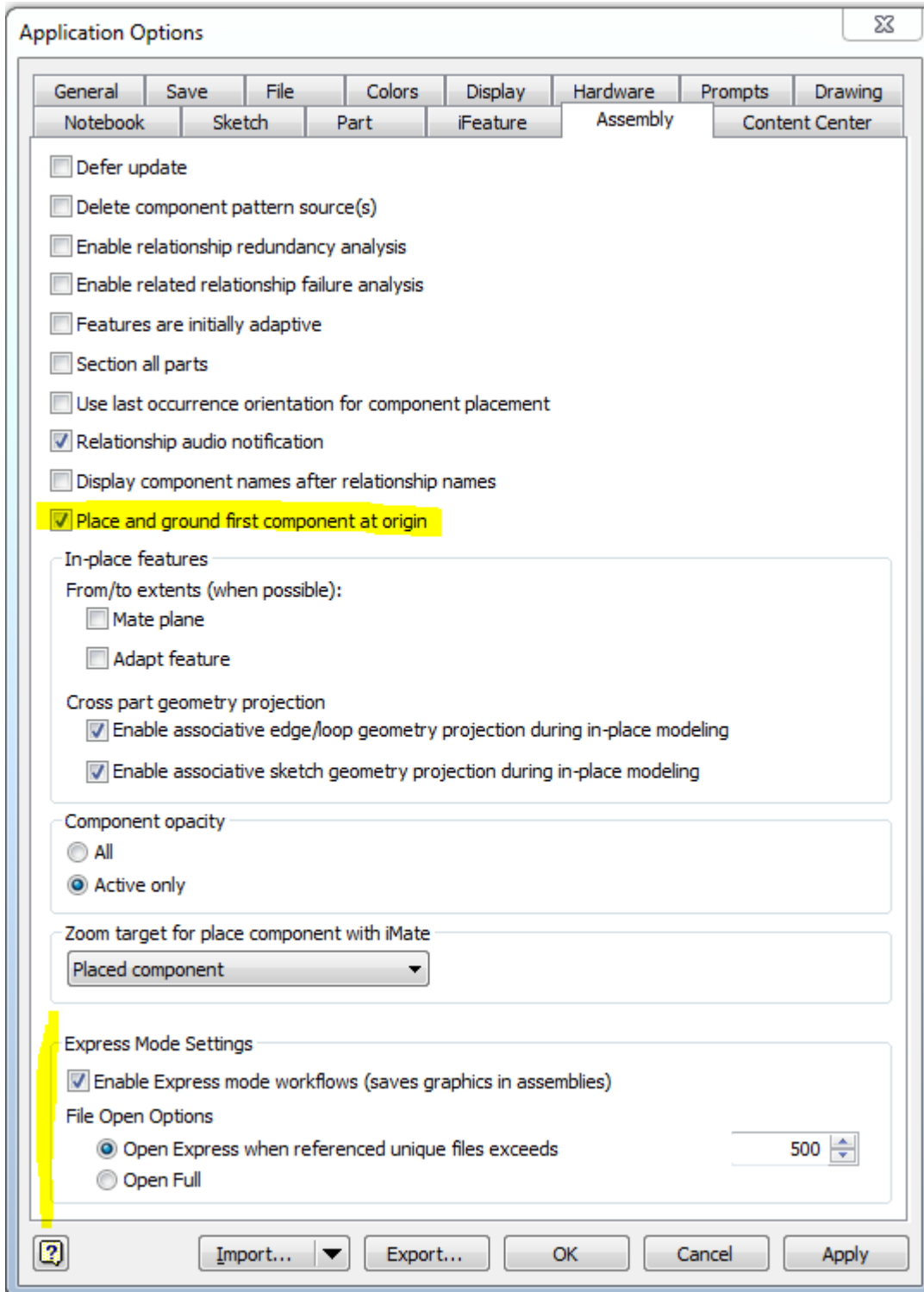
The default for a new part is now to NOT start with a new sketch. If you wish to revert back to the legacy use, then tick “Sketch on x-y plane”

**Display Extended Information...** This option will help easily identify the design intent of the features in the model tree by displaying the key parameter values. Turn off is using iLogic.

**Opaque Surfaces** can be turned on to more easily identify surface topologies.

Turn on the **Construction Environment** if you need access to this on surface file import

## Assembly



The default for the first placed component in an assembly is NOT to ground it.  
Tick the option if you wish to revert to the grounding of the first component.

Express mode settings can be adjusted here.

Version 7.0 / Envisage UK Ltd / 6th June 2013