

Autodesk® Productstream®

Manage your complete design.



A Practical Approach to Data Management

Stay ahead of the competition by effectively managing workgroup design data—enabling Digital Prototyping and helping to reduce design process time. By improving reuse of design data and collaboration among design team members, and by automating the design review process, your company can shorten development cycles and get products to market faster.

Facing these issues?

- Too much time is spent searching for design data.
- Good designs are being unintentionally overwritten.
- Existing product designs cannot be reused to shorten project times.
- It is difficult to enable team-based design across multiple teams.
- Design and manufacturing are unable to easily share design data.
- Processes for revision and release control are manual and error-prone.
- It is difficult to assess the impact of proposed changes across different product designs.
- Design teams are unable to track who, when, or why design changes are made.
- High-end product lifecycle management systems are too complicated and expensive.

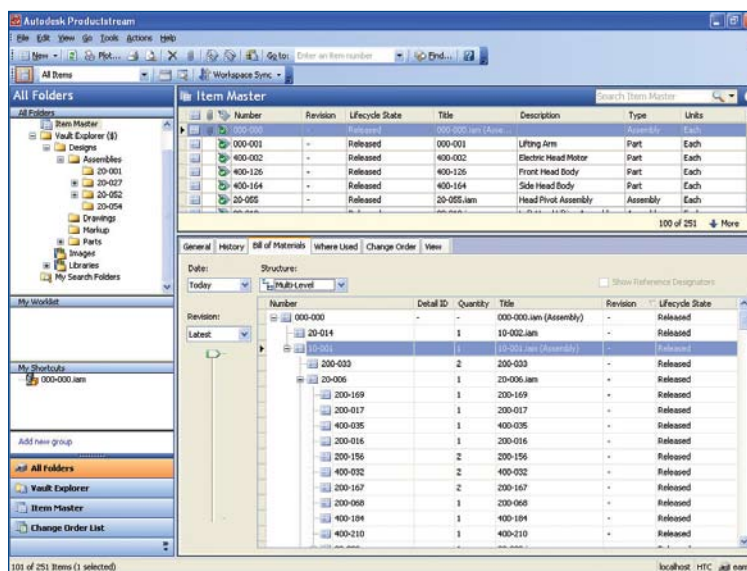
Discover Autodesk's unique approach to data management.

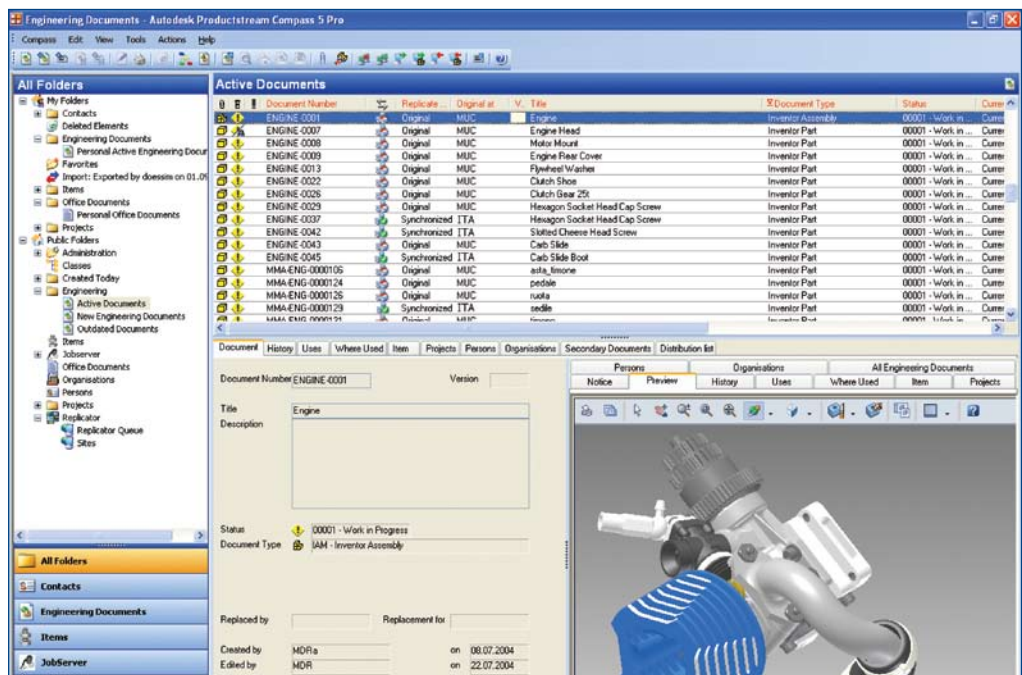
Autodesk® Productstream® software securely stores and manages engineering design data and related documents, and serves as the pipeline between different workgroups in the Digital Prototyping workflow.

The Autodesk Productstream family of product data management (PDM) applications provides a modular and practical approach to controlling design data and maximizing its value. Whether your business demands standard, ready-to-use applications or a custom configured implementation, a Productstream offering is right for you. Productstream users have consistently shortened product development cycles and improved their manufacturing processes—all while minimizing the complications and expense traditionally associated with other PDM systems. Productstream provides the tools to help users track and control design data, and complete projects on time and on budget. The result: fewer design iterations, increased design reuse, and improved collaboration.

Organize Design Data for Better Reuse

Maximize the return on your company's investment in design data by driving design reuse with Productstream, which delivers tools for selective copying of design data to help shorten product development time and avoid rework. By centralizing the storage of all design data and related documents, users can better organize information and reduce the time needed to find, reference, and reuse design data. And, as product designs evolve and become more complicated, Productstream protects designers and engineers from unintentional overwriting of good designs.





Automate and Manage Product Release and Change

A major factor in getting products to market faster is maintaining control of design data throughout the product lifecycle. Obstacles to maintaining control typically include manual processes for release and bill of materials management, which are slow and error-prone—ultimately leading to design project delays and shop-floor errors. With Productstream, users can automate change and release processes and more accurately convey design intent. Productstream automates notification—helping to reduce development cycle times and improve the communication of critical digital knowledge.

Increase Sharing and Collaboration

Keep designs digital to give everyone access to the most up-to-date information. Autodesk Productstream is the digital pipeline that connects engineering workgroups and departments—enabling users to review, edit, and approve designs before releasing them to manufacturing. From the automation and capture of design reviews to the distribution and synchronization of design data to remote groups, the Productstream family of applications facilitates better collaboration between designers, design workgroups, manufacturers, and suppliers. By using DWF™ technology and Autodesk® Design Review software, Productstream gives team members access to the latest designs and makes it possible to capture feedback from tooling, assembly, or fabrication much earlier—helping to prevent costly errors later in the process.

In addition, Productstream helps users extend the value of their digital prototypes by enabling design data and information to be shared with other team members and business systems throughout the enterprise. Productstream provides the capabilities to securely share designs down the hall or around the world. With the efficient sharing of designs comes the ability to track when, why, and by whom design changes are made in the collaboration process. With Productstream, users create an electronic audit trail that notifies decision makers, captures markups, tracks the approval flow, and maintains a complete history of design revisions.

DWF Technology and Autodesk Streamline

Accelerate your product development process by sharing and managing documents across your organization and beyond your firewall.

- Autodesk Design Review software—the digital way to review, measure, and mark up designs—enables your extended team to comment on 2D and 3D designs while protecting your intellectual property. Tight integration with Autodesk® Inventor™ and AutoCAD® software applications enables accurate communication of design information, and DWF-based markups can be round-tripped to help speed the revision process. Autodesk Design Review software is available as a free* download from www.autodesk.com/designreview.
- Autodesk Streamline® on-demand collaborative project management solution provides a central online location for storing, managing, and controlling project documents. Autodesk Design Review software is embedded within Autodesk Streamline to accelerate reviews and approvals.

Digital Prototyping for the Manufacturing Market

Autodesk is a world-leading supplier of engineering software, providing companies with tools to experience their ideas before they are real. By putting powerful Digital Prototyping technology within the reach of mainstream manufacturers, Autodesk is changing the way manufacturers think about their design processes and is helping them create more productive workflows. The Autodesk approach to Digital Prototyping is unique in that it is scalable, attainable, and cost-effective, which allows a broader group of manufacturers to realize the benefits with minimal disruption to existing workflows, and provides the most straightforward path to creating and maintaining a single digital model in a multidisciplinary engineering environment.

Learn More or Purchase

Access specialists worldwide who can provide product expertise, a deep understanding of your industry, and value that extends beyond your software purchase. To purchase Autodesk Productstream software, contact an Autodesk Premier Solutions Provider or Autodesk Authorized Reseller. To locate the reseller nearest you, visit www.autodesk.com/reseller.

Stay ahead of the competition with Autodesk's practical approach to data management. To learn more about Autodesk Productstream, visit www.autodesk.com/productstream.

Autodesk Services and Support

Accelerate return on investment and optimize productivity with innovative purchase methods, companion products, consulting services, support, and training from Autodesk and Autodesk authorized partners. Designed to get you up to speed and keep you ahead of the competition, these tools help you make the most of your software purchase—no matter what industry you are in. To learn more, visit www.autodesk.com/servicesandsupport.

Autodesk Subscription

Get the benefits of increased productivity, predictable budgeting, and simplified license management with Autodesk® Subscription. You get any new upgrades of your Autodesk software and any incremental product enhancements, if these are released during your subscription term, and you get exclusive license terms available only to subscription members. A range of community resources, including web support direct from Autodesk technical experts, self-paced training, and e-Learning, help extend your skills and make Autodesk Subscription the best way to optimize your investment. To learn more, visit www.autodesk.com/subscription.

*Free products are subject to the terms and conditions of the end-user license agreement that accompanies download of the software.

Autodesk is committed to sustainability. This brochure is printed on 25 percent postconsumer waste recycled paper.

Autodesk, AutoCAD, Autodesk Inventor, Autodesk Streamline, DWF, Inventor, and Productstream are registered trademarks or trademarks of Autodesk, Inc., in the USA and/or other countries. All other brand names, product names, or trademarks belong to their respective holders. Autodesk reserves the right to alter product offerings and specifications at any time without notice, and is not responsible for typographical or graphical errors that may appear in this document. © 2008 Autodesk, Inc. All rights reserved. 00000000000118313